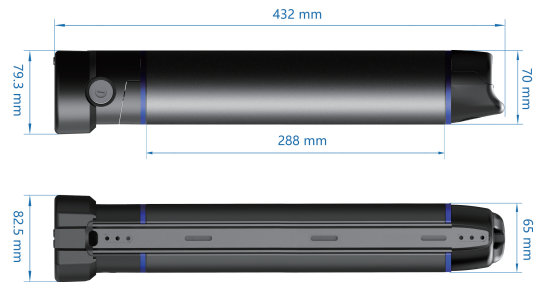


CE60



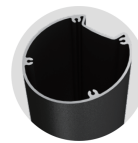
Details



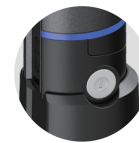
- ① Top cover
- ② Water resistance seal
- ③ Alluminum case
- ④ Lock
- ⑤ Base
- ⑥ Fixed alluminum bar
- ⑦ Cells



Top cover



Alluminum case



Lock



Base

Specifications	
Cell Type	18650 Li-ion Battery
BMS	"Canbus; UART; Hardware"
Max Batteries	32 pcs
Dimension	432x82.5x79.3mm
Capacity	
36V	9.6Ah, 10.5Ah
Other Specifications	
Charging Port	3PIN/DC2.1
Discharging Port	4PIN
MotorPower	250~500W
Charger	2A, 3A US/EU standard available
Casing Type	Self-design,ODM available
Cells brand	Samsung,LG, Lishen etc.