

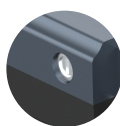
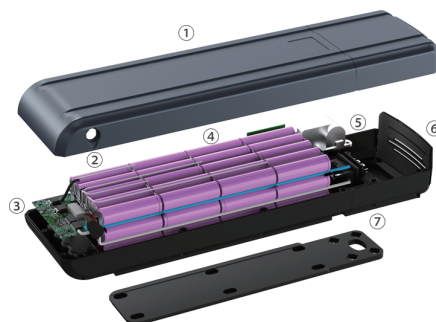
H45



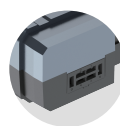
Details



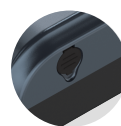
- ① Top cover
- ② Charge port
- ③ BMS
- ④ Cell pack
- ⑤ Controller box
- ⑥ Rear light
- ⑦ Bottom cover



Lock



Discharge port



Charge port



Power display

Specifications	
Cell Type	18650 Li-ion Battery
BMS	"Canbus; UART;Hardware"
Max Batteries	60 pcs
Dimension	453x120x74mm
Capacity	
36V	13Ah, 15Ah, 19.2Ah, 21Ah
48V	12Ah, 12.8Ah, 14Ah
Other Specifications	
Charging Port	3PIN/DC2.1
Discharging Port	6PIN
MotorPower	250~750W
Charger	2A, 3A,5A US/EU standard available
Casing Type	Self-design,ODM available
Cells brand	Samsung,LG,Lishen etc.