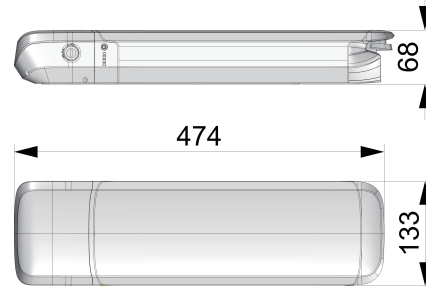


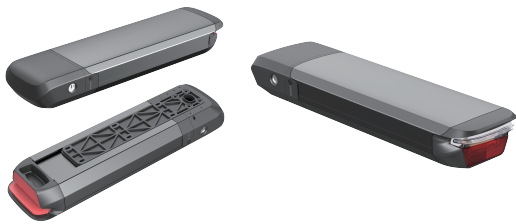
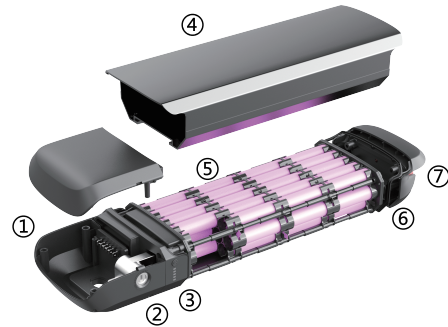
HT



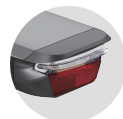
Details



- ① Controller box
- ② Lock
- ③ Power display
- ④ Alluminum case
- ⑤ Cell pack
- ⑥ Water resistance seal
- ⑦ Rear light



Lock



Rear light



Charge port



Power display

Specifications	
Cell Type	18650 Li-ion Battery
BMS	"Canbus; UART; Hardware"
Max Batteries	60 pcs
Dimension	474x133x68mm
Capacity	
36V	13Ah, 15Ah, 19.2Ah, 21Ah
48V	12Ah, 12.8Ah, 14Ah
Other Specifications	
Charging Port	5PIN
Discharging Port	6PIN
MotorPower	250~750W
Charger	2A, 3A US/EU standard available
Casing Type	Self-design, ODM available
Cells brand	Samsung, LG, Lishen etc.