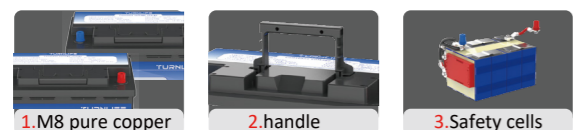
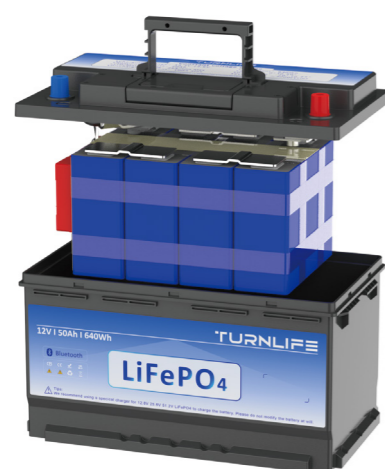


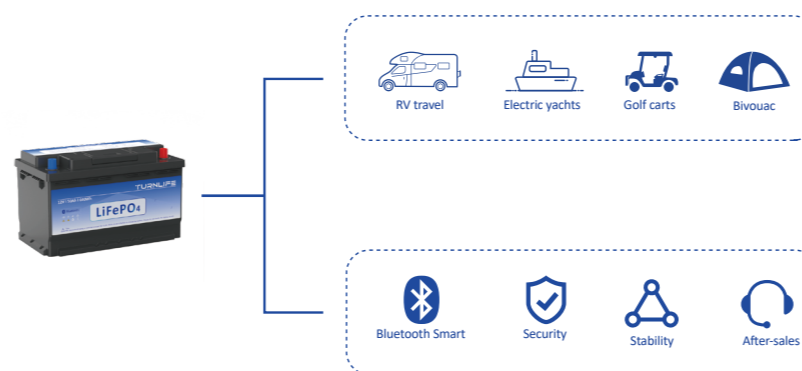
QSL12050

LiFePO4 lithium accu 50Ah 12V met Bluetooth

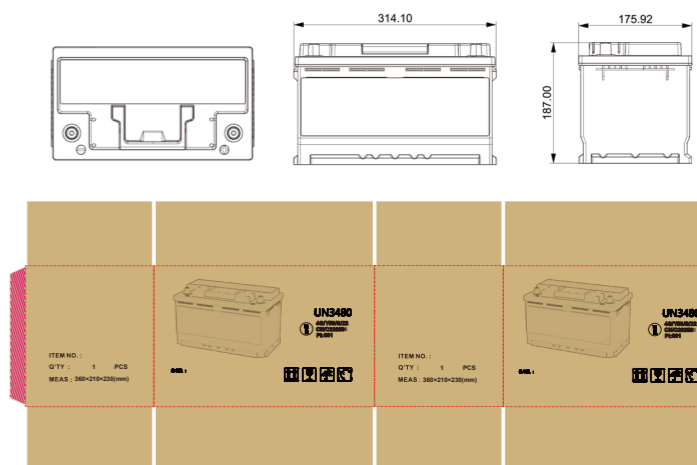
Producttester: Zeer goed



•Applications and features



•Packaging and size



PRODUCT PARAMETER

Specifications	
Watt-Hour	640Wh
Capacity	50Ah
Voltage	12.8V
Weight	9kg
Dimension	318*176*187mm
BMS	Yes
Efficiency	98%
Max charge/Discharge Current	50A/100A
Max Charge/Voltage	14.4V-14.6V
Cut-off Voltage	9.2V-10V
Peak Discharge	150A 0.5s
Storage	0° to 50°
Discharge	-20° to 55°
Low Temp Charging Protection	Yes
Connection Capability	Max 4S-16P
Warranty	5 years